

GPS/AVL for **Winter Operations**



- **Optimize Material Management**
- **Manage Operating Costs Efficiently**
- **Meet Internal and External Accountability Standards**
- **Increase Levels of Service**

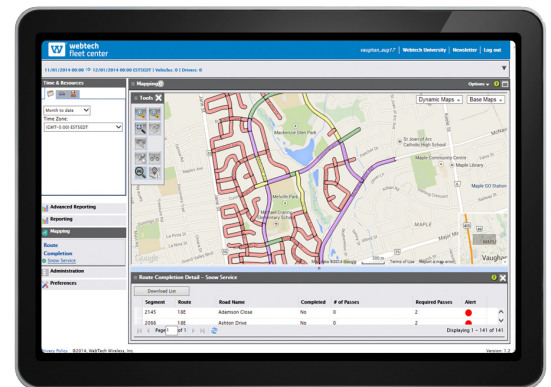
FLEET MANAGEMENT SOLUTIONS FOR WINTER OPERATIONS

Are you able to plan your material requirements and measure your material application with precision?

Can you easily identify gaps in service for rapid resolution?

Can you track fleet progress against planned routes in real-time, and access historical data to recreate events as they occurred?

Webtech Wireless' GPS/AVL solution delivers enhanced fleet intelligence to help you achieve maximum fleet operational effectiveness and enhanced levels of service. Through proven integrations to road and air temperature sensors, spreader controllers and plow sensors, Webtech delivers accurate material application measurement and detailed reporting abilities so you can streamline your fleet operations, provide better service and lower costs.



Increase your efficiency during the harshest of winter conditions!

Optimize your winter operations, maintain accountability and increase your customer service.



Optimize Material Management:

An extensive array of sensor integrations (road and air temperature sensors, spreader controllers, plow sensors) drive enhanced fleet intelligence for optimized material usage - keeping your roads safe.



Lower Operational Costs:

Streamline your operations with a GPS/AVL fleet management solution that will grow as your business grows. Advanced reports and intuitive dashboards help deliver the data your organization needs to quickly identify roadblocks, efficiently manage exceptions and develop and apply lean business principals.



Achieve Maximum Accountability and Transparency:

Leverage GPS/AVL data your agency is already gathering to generate public-facing content for increased transparency and customer service. Ensure your customers have first-hand knowledge of critical road conditions, emergency alerts and more.



Meet Compliance Initiatives:

Utilize enhanced fleet intelligence to ensure compliance with internal guidelines and external regulations. Accurate material usage data also ensures environmental standards compliance.



Enhance Levels of Service:

Quickly identify gaps in service for efficient resolution using real-time Route Completion data. Further optimize your operations with seamless integration of GIS maps for accurate, detailed fleet activity information delivering exact, first-hand service level knowledge.



Minimize Liability:

Address liability concerns head-on with access to all historical data. Re-create past events and confirm precisely where your fleet was and what it has been doing.

What our Customers say:

CITY OF OTTAWA, ONTARIO

Ottawa is the capital of Canada. Incorporated in 1855, the City has evolved into the political and technological center of Canada. Home to 883,391, Ottawa is the second-largest city in Ontario, and the fourth-largest city and metropolitan area in the country.

“Our [third-party contractor] compliance rate improved by 15 percent, which accounts for the remaining savings of more than half a million dollars.”

Dan O’Keefe, Manager of Road Traffic Operations,
City of Ottawa